

DP-2200

Digital Ultrasonic Diagnostic Imaging System

Technical Specifications:

General Descriptions

Imaging mode: B, B+B, B+M, M
 Gray scale: 256
 Display: 10" non-interlaced
 Transducer frequency: 2.5 ~ 10MHz
 Transducer connector: 1 (standard), 2 (optional)
 Dynamic imaging technology: Digital Beam-forming (DBF)
 Dynamic Receiving Focusing (DRF)
 Up to 16 zone transmitting focusing
 Dynamic Frequency Scan (DFS)
 Real-time Dynamic Aperture (RDA)
 Dynamic Receiving Apodization (DRA)
 Scanning angle: from 67 to 120 degree (depending on transducers)
 Scanning depth (mm): from 21.6 to 248 (depending on transducers)

Imaging Processing

Pre-processing: dynamic range
 edge enhancement
 frame correlation
 4-segment TGC adjustment
 IP (Image Process)
 acoustic power adjustment
 high resolution/high frame rate select
 Post-processing: gray map
 left-right reverse
 up-down reverse

Functions:

Cine loop: 128-frame cine loop memory
 Storage media: internal flash and USB
 Zoom: panoramic in real-time and frozen condition
 Built-in image archive: permanent storage up to 90 images

Measurement & Calculation

B-mode: distance, circumference, area, volume, angle, ratio, histogram, profile, S%
 M-mode: distance, time, velocity, heart rate (2 cycles)
 Software packages: abdomen, gynecology, obstetrics, orthopedics

Others

Peripheral port: video output 1
 USB port 1
 VGA output port 1
 DICOM3.0 1(optional)
 Power supply: 100-240VAC±10%, 50Hz/60Hz
 Dimensions: 360mm (W) X 320mm (L) X 270mm (H)
 Net weight: 9.5Kg

Standard Configurations

DP-2200 main unit
 10" non-interlaced monitor
 One transducer connector
 128-frame CINE loop
 90-frame image storage
 One USB port
 Measurement & calculation software package
 Electronic convex array transducer: 35C50EB (2.5/3.5/5.0MHz)

Options

Electronic linear array transducer: 75L38EB (5.0/7.5/10MHz)
 Electronic linear array transducer: 75L60EA (5.0/7.5/10MHz)
 Electronic endocavity transducer: 65EC10EB (5.0/6.5/8.0MHz)
 Electronic micro-convex array transducer: 35C20EA (2.5/3.5/6.0MHz)
 Electronic micro-convex array transducer: 65C15EA (5.0/6.5/8.0MHz)
 Two transducer connectors
 Needle-guided brackets
 DICOM3.0
 Footswitch
 Mobile trolley
 Hand carried bag



MINDRAY



DP-2200

Digital Ultrasonic Diagnostic Imaging System



MINDRAY™

Mindray Building, Keji 12th Road South, High-tech Industrial Park,
 Nanshan, Shenzhen 518057, P. R. China
 Tel: +86 755 2658 2888 2658 2492 Fax: +86 755 2658 2680
 E-mail: intl-market@mindray.com Website: www.mindray.com



DISTRIBUTOR:





DP-2200

Digital Ultrasonic Diagnostic Imaging System

Complete image solutions and economic price make Mindray's DP-2200 meet challenges in today's ultrasound market. With its full digital technology and high quality transducers, DP-2200 provides the elegant image quality as an ideal portable working station. It will meet your daily diagnostic needs without any compromise.

Full digital technology and wide applications



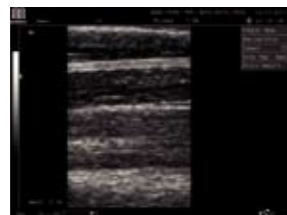
Fetal head



IVC



Thyroid



Median nerve

- Mindray's full digital technology yields high-quality image, which will bring you more assurance for your daily diagnoses
- A suite of complete clinical solutions comes with a wide range of transducers for obstetrics, gynecology, abdomen, urology, small parts, orthopedics and pediatrics

Versatile file management solutions

- Powerful file management solutions make DP-2200 unique
- Images and cine files can be transferred to PC via USB port. Optional DICOM allows users to benefit from network image management that increase efficiency
- Permanent storage up to 90 images, 128-frame cine loop memory and internal flash memory for easy image reviewing

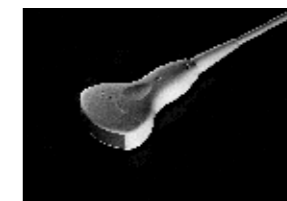


Confidence of measurement power

- A full range of powerful user-define image preset, exam modes and measurement and calculation packages coupled with abundant measurement items (e.g. volume, stenosis, heart rate)
- Different population oriented OB measurement formulae for more accurate results (e.g. Tokyo, Hadlock, Nelson). The fetal growth indexes include eighteen items (e.g. EFW, AFI, BPD)



35C20EA Micro-convex
Application: Pediatric, Cardiac



35C50EB Convex
Application: Abdomen, GYN, OB, Urology



65EC10EB Endocavity
Application: Endovaginal, Endorectal



75L38EB Linear
Application: Small Parts



75L60EA Linear
Application: Orthopedics, Breast, Musculoskeletal



65C15EA Micro-convex
Application: Pediatrics